

S.No. 156, Near Savali Corner, Soli Poonawalla Road (Solapur Road), Hadapsar, Pune - 411028.
Tel.: 020-67452200, 67452222. www.vpcf.org. Email: info@villoopoonawallahospital.com



WELFARE MEDICAL FOUNDATION'S
VILLOO POONAWALLA MEMORIAL HOSPITAL
विलू पुनावाला मेमोरिअल हॉस्पिटल

Ethical and Affordable

नैतिक आणि परवडेल असे



HOSPITAL FOR ALL





Ethical and Affordable | नैतिक आणि परवडेल असे



Modern Technology, expert hands, and caring attitude

Welcome to the Welfare Medical Foundation's Viloo Poonawalla Memorial Hospital, a tertiary care multi-speciality hospital located at Hadapsar in Pune. Committed to providing ethical and affordable medical services at the highest standards of quality.

Equipped with 59 beds (soon to be expanded to 100 beds), the hospital has airy, spacious and well-ventilated wards, backed by a team of friendly, courteous and competent medical experts, smooth processes and prompt emergency services.



Inaugurated on 10th December 2016, with the hands of Shri Sachin Tendulkar, along with Ms Natasha Poonawalla (Chairperson, Viloo Poonawalla Foundation), Mr Adar Poonawalla (CEO, Serum Institute of India) and Dr Cyrus Poonawalla (Chairman & Managing Director, Serum Institute of India)



Left to right: Dr Bhushan Mangaonkar, Mr.Pramod Khivansara, Adv. Kiran Kothadiya, Mr Chandru Kripalani, Ms Natasha Poonawalla (Chairperson, Viloo Poonawalla Foundation), Dr Leena Dobhada, Late Dr Satyen Dobhada, Dr Kiran Shah - Trustees of Welfare Medical Foundation

Welfare Medical Foundation (WMF)

A well-established name in the vicinity since 1991, the Welfare Medical Foundation has been partnering with similar-minded institution to offer excellent medical services at affordable rates. Previously known as 'Mohintara Hospital', the WMF in association with Viloo Poonawalla Foundation and the Serum Institute of India, constructed, equipped and commissioned this hospital. It has changed the healthcare environment by benefitting people from various sections of society through its social activities.



Accident & Emergency



Intensive Care Unit



Operation Theatres



Labour Room/Obs OT

Ethical and Affordable | नैतिक आणि परवडेल असे



Modern Technology and Expert Hands

Accident & Emergency

Round-the-clock 'Accident and Emergency' Centre well equipped to address any medical emergency posing an immediate risk. Equipped with Advanced Cardiac Life Support (ACLS), as well as the entire range of speciality services including trauma, cardiac, reconstructive services. We have highly skilled doctors, technicians and nurses for the shortest and most prompt turnaround time for diagnosis and treatment to the patients.

Intensive Care Unit

Offers frontline management of Trauma, Heart, Brain, GIT, renal failures and post-operative care of fragile patients.

One of the best doctor : nurse : attendant ratio to patients, almost every bed in the ICU is supported by individual ventilators. Our doctors are the best at handling emergencies, ensure constant monitoring and treatment with utmost care. An 'Isolation Room' for highly contagious diseases with barrier nursing.

There is also a special area for the family of the patient to stay while the patient is being treated in the ICU.

Operation Theatres

Three major well-equipped operation theatres, one obstetric OT, one Labour Room ensuring patient safety and convenience at all times. Adhering to international standards of infection control practices, with well-supported recovery rooms. Our OT's are equipped with latest equipments like Laproscopy system, Arthroscopic shaver system with RF etc.

OPDs

The shortest waiting time for our patients, prompt appointment services, hassle-free documentation, spacious and extremely patient-friendly ambience, is what sums up the OPD facilities at our hospital. Our team has easy access to the senior-most consulting doctors of the city for prompt medical support. Many procedures like Uroflowmetry conducted on OPD basis.



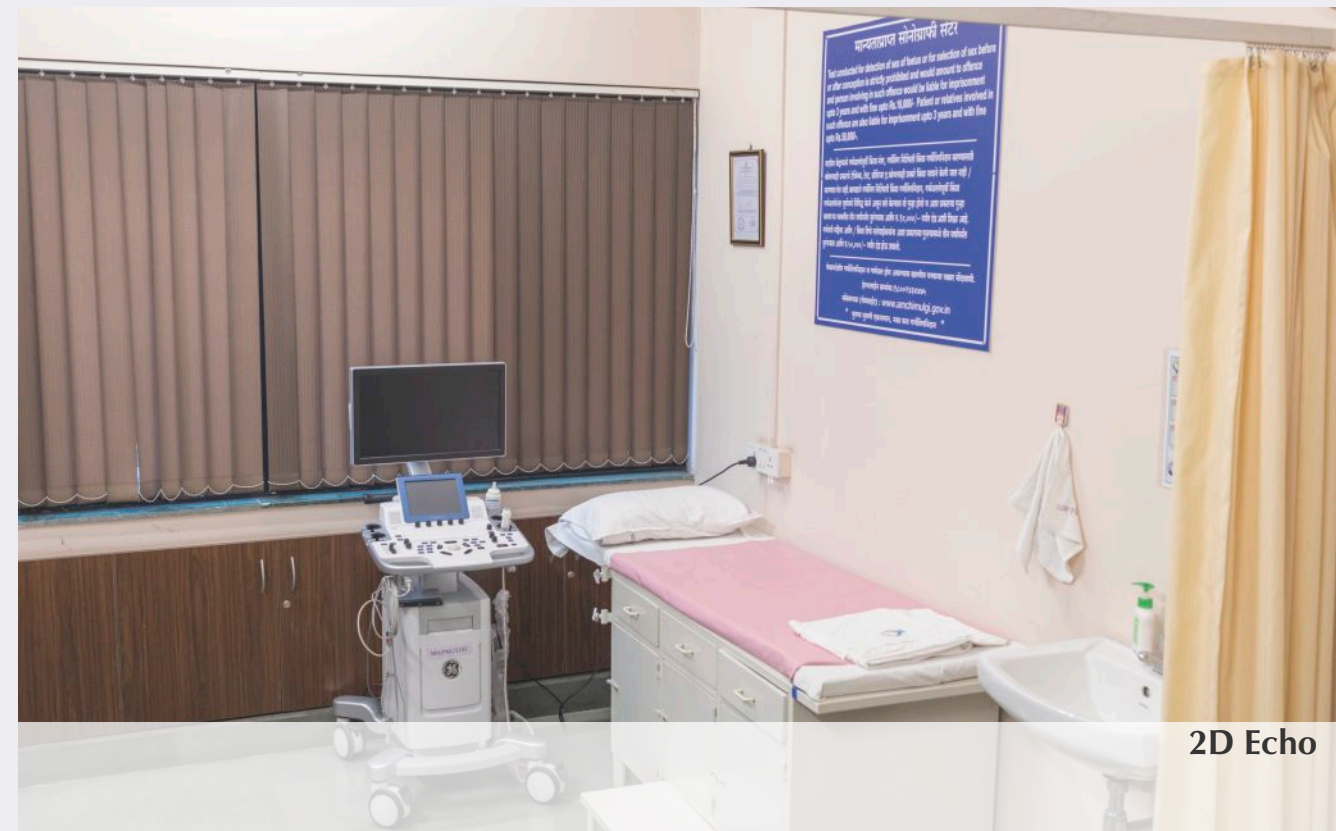
X-Ray



Pathology Lab



Ultrasound



2D Echo

Ethical and Affordable | नैतिक आणि परवडेल असे



Diagnostics

Our Diagnostic labs are well equipped to provide timely and accurate reports to patients. Abiding by evidence-based medicine, tests are conducted only when required and prescribed.

X-Ray

With the latest equipment for carrying out X-rays, we provide the most precise imaging to help doctors diagnose, monitor and treat medical conditions, while ensuring that patients are not exposed to unnecessary radiation (in compliance with the AERB guidelines).

Pathology Lab

Complete personalized pathology testing facilities under one roof, through accessible and advanced technology like Immunoassay Analyser, Automated Culture and Sensitivity techniques supported with expert sample collection methods at affordable prices. Home-collection facility is also available. Be assured of accurate and timely test results at all times.

Ultrasound

Backed by specialists and accredited sonologists, our ultrasound services allow improved image quality with diagnostic accuracy for obstetric and gynaecological conditions as well as general and vascular ultrasounds.

2D Echo

Equipped with the latest machines for two-dimensional non-invasive Echocardiography providing excellent images of the heart, para-cardiac structures, and the great vessels. Our team of physicians are well equipped in the diagnosis, management and follow-up of patients with any suspected or known heart diseases.

Diagnostics

Endoscopy Unit

Undertaking expert examinations of the inside of the body to diagnose, evaluate, and treat conditions of the oesophagus, stomach, and portions of the intestine, our Endoscopy Unit provides a one-stop approach for diagnostic and therapeutic gastrointestinal and bronchoscopy procedures.

Audiometry

Audiometry services measure hearing ability that happens with variation in the intensity of sound and pitch. We perform the diagnostic service to measure hearing levels and measure the ability to distinguish between sounds of varying intensities, recognize pitch and also the ability to distinguish speech from background noise.

TMT (Treadmill Test)

The 'Cardiac Stress Test' or the 'Treadmill Test' measures the heart's ability to respond to external stress in a controlled clinical environment. Symptoms and blood pressure response to heart stimulation are measured with the patient being connected to an electrocardiogram (ECG), with the level of mechanical stress progressively increasing by adjusting the difficulty (steepness of the slope) and speed.

EEG

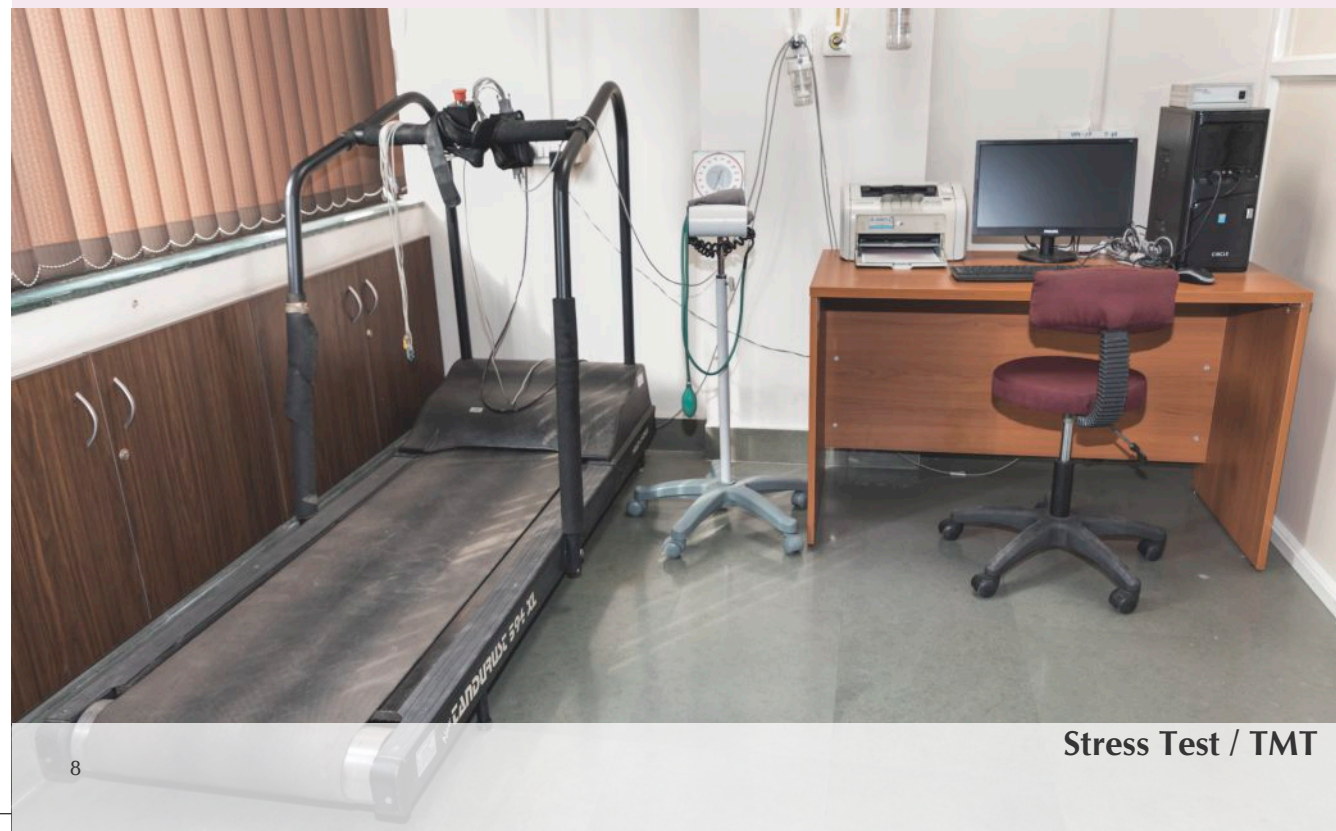
Our non-invasive electroencephalogram (EEG) records electrical patterns in the brain and helps diagnose conditions such as seizures, epilepsy, head injuries, dizziness, headaches, brain tumours and sleeping problems. Backed by a team of competent technicians, the support provided for neurology is excellent and unmatched.



Endoscopy Unit



Audiometry



Stress Test / TMT



EEG



Dialysis



ENT OPD Room



Ophthalmology OPD



Neonatal ICU

Ethical and Affordable | नैतिक आणि परवडेल असे



Dialysis

Offering the most affordable dialysis in the vicinity, we also provide the patient with food and other day care facilities required during dialysis.

Ophthalmology

Well adapted to deal with the prevention, diagnosis and treatment of diseases of the eye. Also equipped with advanced *phaco emulsification* system to perform micro-surgeries. Our team of ophthalmologists takes pride in early detection of vision related diseases.

Ear Nose Throat

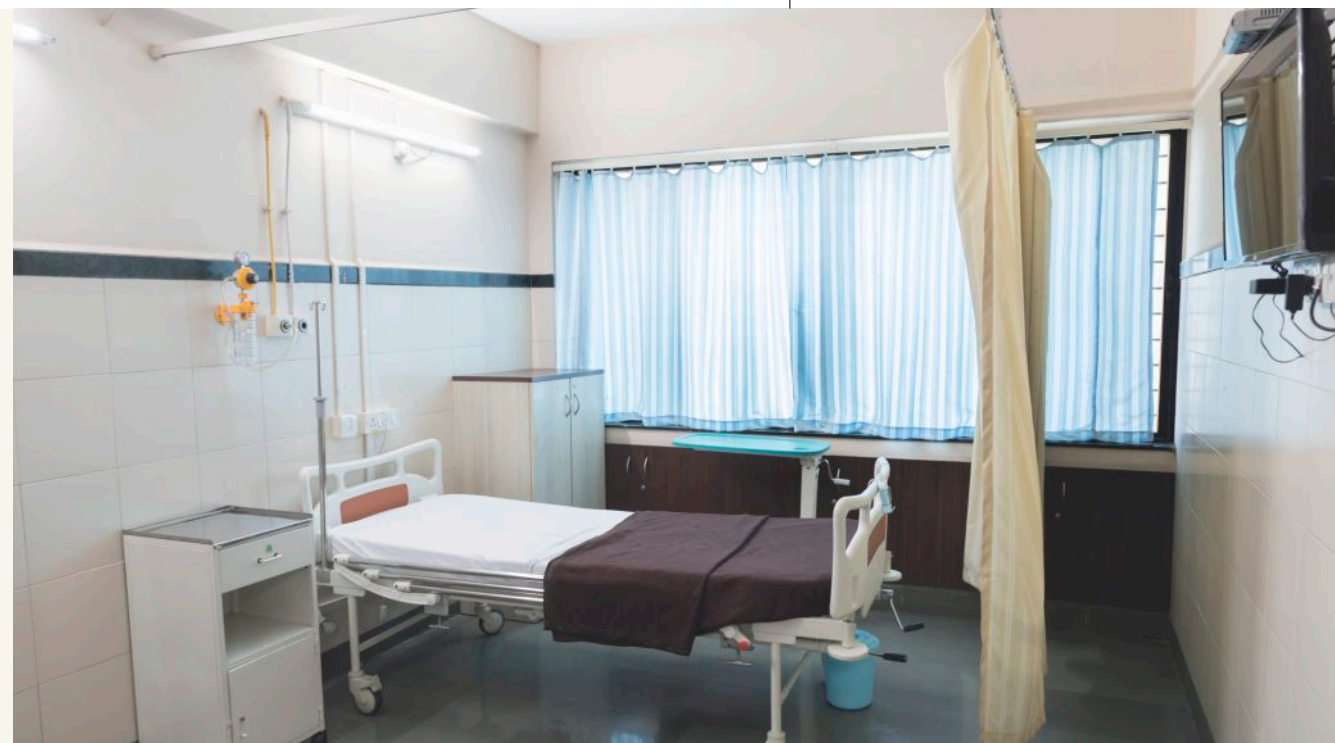
Offering the best, most affordable and comprehensive diagnosis and treatment of Ear, Nose and Throat ailments. We also offer specialised services in audiometry with implant and hearing aids.

Paediatrics/ Neonatal ICU

We give special and extra care in making the experience of children visiting our paediatrics section, special and memorable. The paediatric department provides care for children from birth to 17 years of age, from preventive care to treatments. The department consists of paediatric outpatient, the general paediatric wards, the 'Neonatal Intensive Care Unit'.



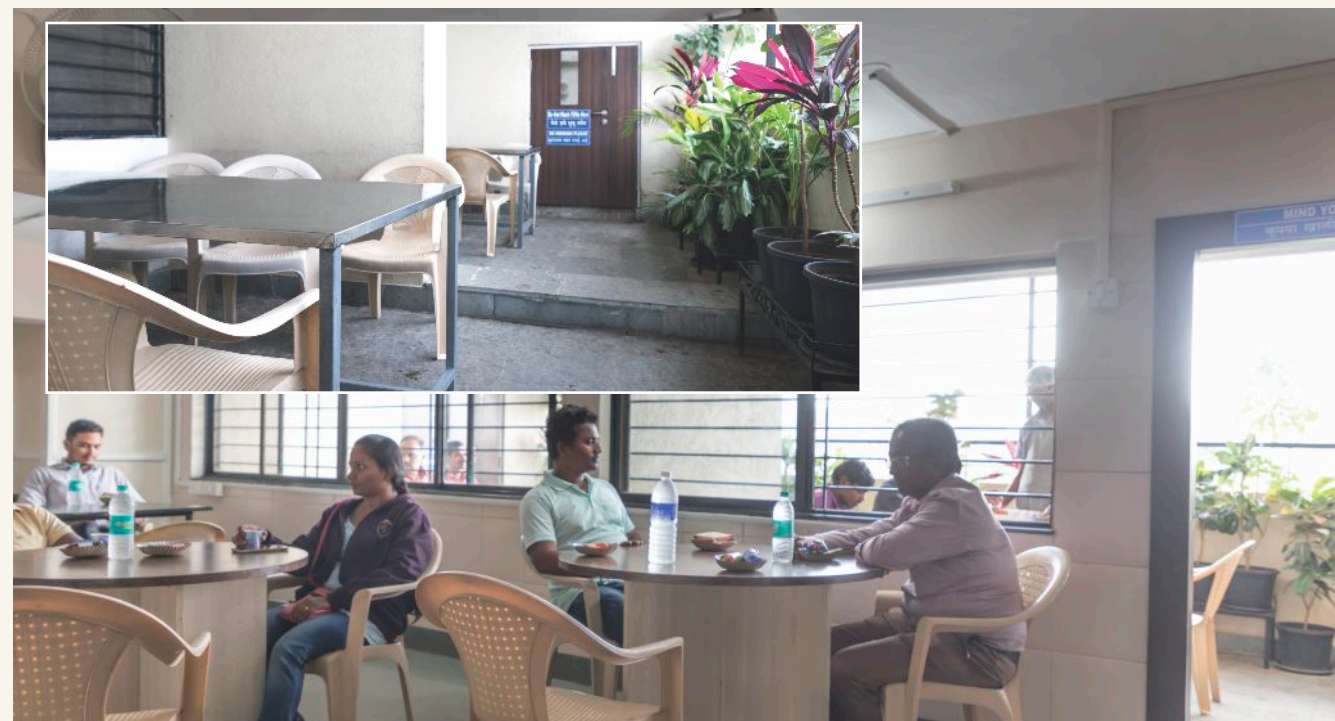
General Ward



Private Room



Deluxe Room



Canteen facility For
Attendants / Visitors

Ethical and Affordable | नैतिक आणि परवडेल असे



WELFARE MEDICAL FOUNDATION'S
VILLOO POONAWALLA MEMORIAL HOSPITAL
विलू पुनावाला मेमोरिअल हॉस्पिटल
Ethical and Affordable नैतिक आणि परवडेल असे



General Ward

Provides a very clean and caring environment to cater to the services to stabilize patients for various illnesses. We ensure, our patients the utmost comfort round-the-clock, along with a team of understanding staff and nurses to attend to their needs. There is also a waiting area designated for patients in the general ward.

Private Rooms

Allowing the patient privacy, in addition to providing additional amenities such as dedicated cupboards, television, and an extra bed for the attending family member with prompt nurses and doctors to attend whenever required.

Day Care facility

Our 'Day Care' facility experts handle a huge number of cases efficiently, so that the patient does not have to get an overnight admission and can go home on the very same day. Chemotherapy, eye surgeries and small infusions and many treatments of similar nature are taken care within the day care facility.

Food and Beverages

Every patient undergoes a detailed nutritional screening and assessment which determines their diet plan. Our food services ensure that good, healthy, nutritious food is served as per each and every patient's diet plan, which is monitored closely. Food Services are also available at a nominal cost for attendants and visitors.



Lobby



Pharmacy



Dental OPD



Physiotherapy Unit

Ethical and Affordable | नैतिक आणि परवडेल असे



Lobby

Centrally air-conditioned, with ample lighting and good comfortable seating arrangements for relatives and visitors, our lobby provides a clean and safe environment for all.

Pharmacy (24-Hours)

Our pharmacy offers round-the-clock services. From over the counter medicines, prescription drugs to generic medicines, and other medical and surgical material, available at discounted rates.

Dental and maxillofacial surgeries

Our team specialises in treating basic to advanced surgeries of neck, face, jaws and the hard and soft tissues of the mouth and maxillofacial (jaws and face) region.

Physiotherapy and Rehabilitation

Our Physiotherapy department is supported with all the latest medical equipments like American Chattanooga machines, advanced mobile combo, VMS, FES, LASER, IFT, TENS, EMG, Ultrasound, Hydrocollator, cryotherapy. Special care is taken by our team of skilled and dedicated physiotherapists to remedy impairment and promote mobility and function.

Medical and Surgical Oncology (Chemotherapy)

Our medical and surgical cancer experts are accomplished to investigate and rehabilitate cancer patients, while adhering to the highest standards of safety. Equipped with a bio safety cabinet for preparation of chemotherapy for cancer patients, our team focusses on their comfort and healing while encouraging a positive atmosphere at all times.



Vaccination Clinic for Young and Adults

As part of the Serum Institute, our team of medical experts guide adults as well as children for enhancing immunity through vaccination.



Ethical and Affordable | नैतिक आणि परवडेल असे



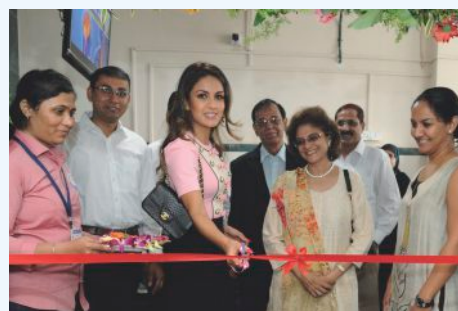
Covid Vaccination

We proudly announce that WMF's Viloo Poonawalla Hospital has become the first private/trust hospital of Pune, who has achieved the magic number of 1Lakh + Covishield vaccination till date.



Community Awareness

Driven by the need to focus on preventive health, the Viloo Poonawalla Memorial Hospital has been promoting awareness on all medical specialities. As a part of the outreach programs, medical camps are conducted regularly for the under-privileged and deprived sections of the society. Other medical services are also offered at discounted rates.



Viloo Poonawalla Wellness Centre



Preventive cost-effective healthcare services catering to all age groups, help identify and minimize risk factors in addition to early detection of illnesses. Our packages offer the fastest turnaround time for tests, along with prompt reporting and expert guidance. Food services are also provided for fasting patients.

PREVENTIVE HEALTH CARE SERVICES

Pre employment health check-up

Executive health check up

Annual health check up for all ages

Obesity, diabetes and hypertension screening

Complete Heart check

Bones and joints check up

Cancer screening services

Bad obs history and fertility profile

Vaccination & health check up for overseas travellers

Occupational health hazards screening